

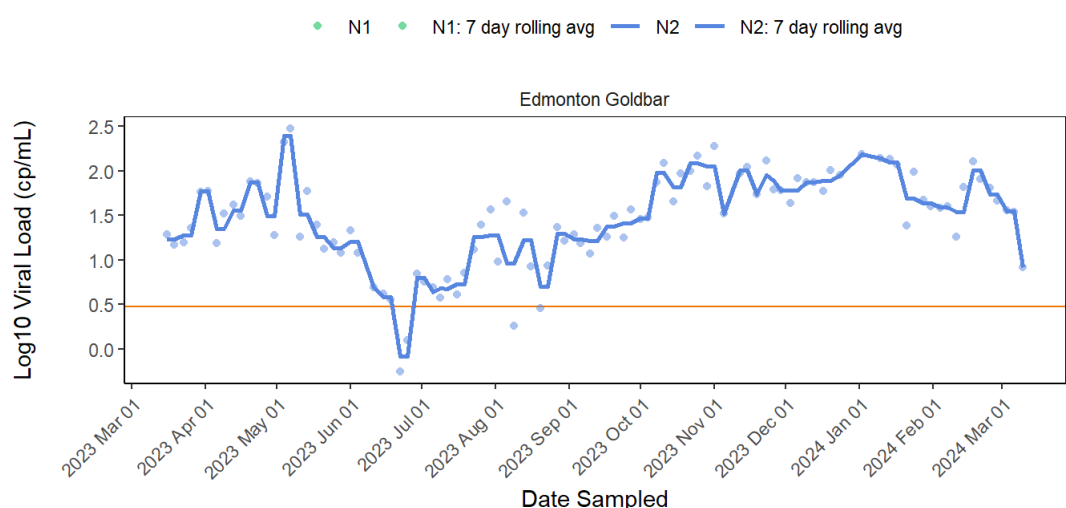
Wastewater Trend Analysis Report: SARS-CoV-2 Detection by N1 and N2 RT-qPCR

Longitudinal data ending 2024-03-16

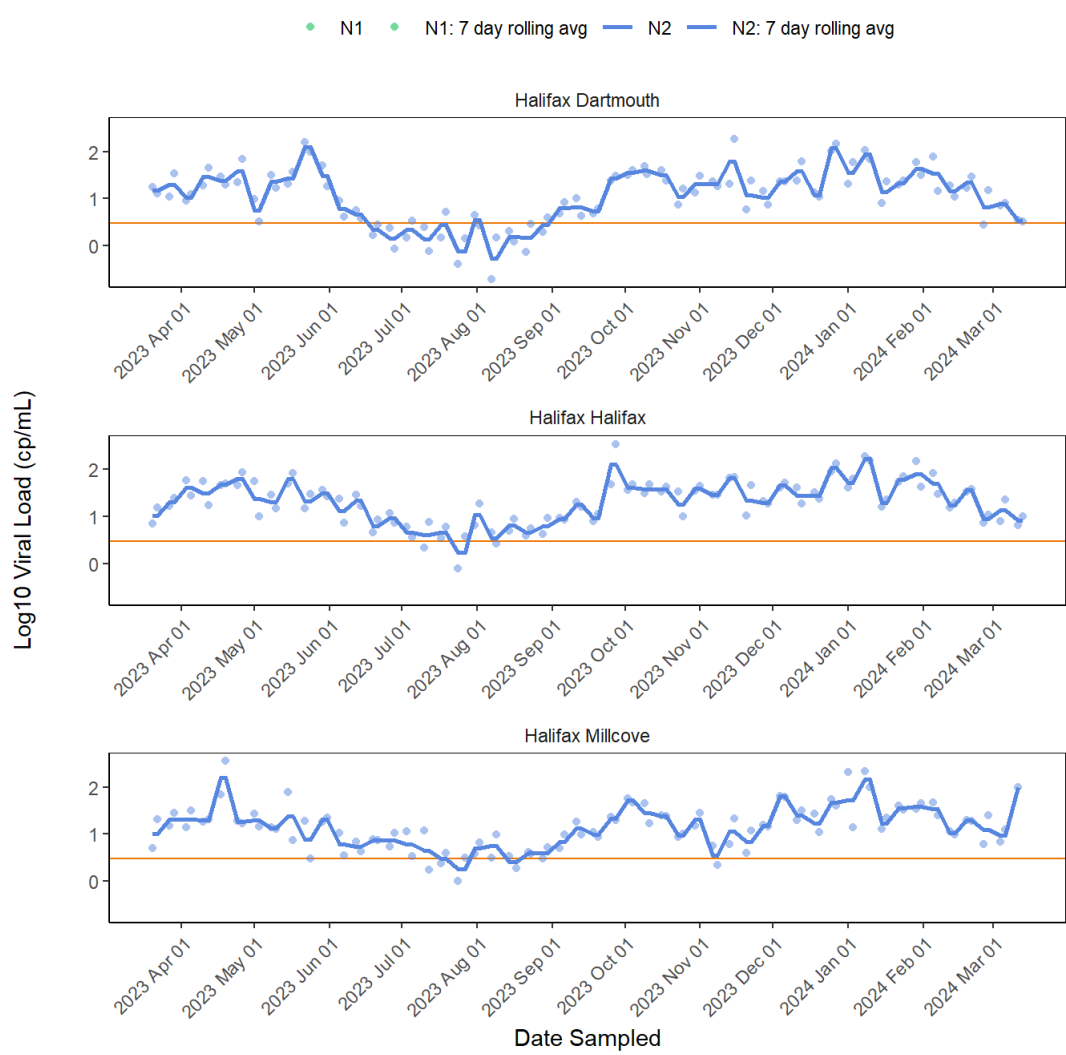
The graphs show the concentration (copies/mL) of the SARS-CoV-2 N1 and N2 genes in wastewater samples from different sites using RT-qPCR. N1 (green) and N2 (blue) are reported for a one year period with lines representing the 7-day rolling average. The orange line represents the limit of quantification of the assay.

Beginning the week of April 25, 2022, the NML will no longer be performing the N1 assay and will only report the N2 results. Since the detection of Omicron in wastewater in late December 2021, our results have shown the N2 assay is more sensitive than N1.

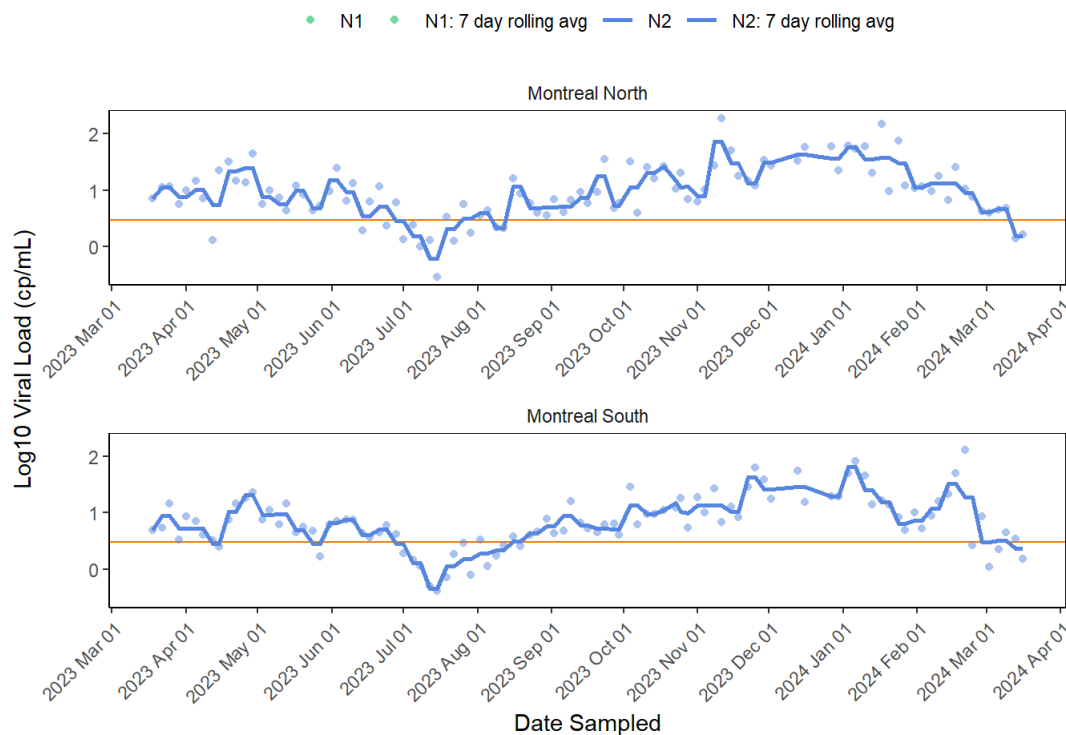
Edmonton



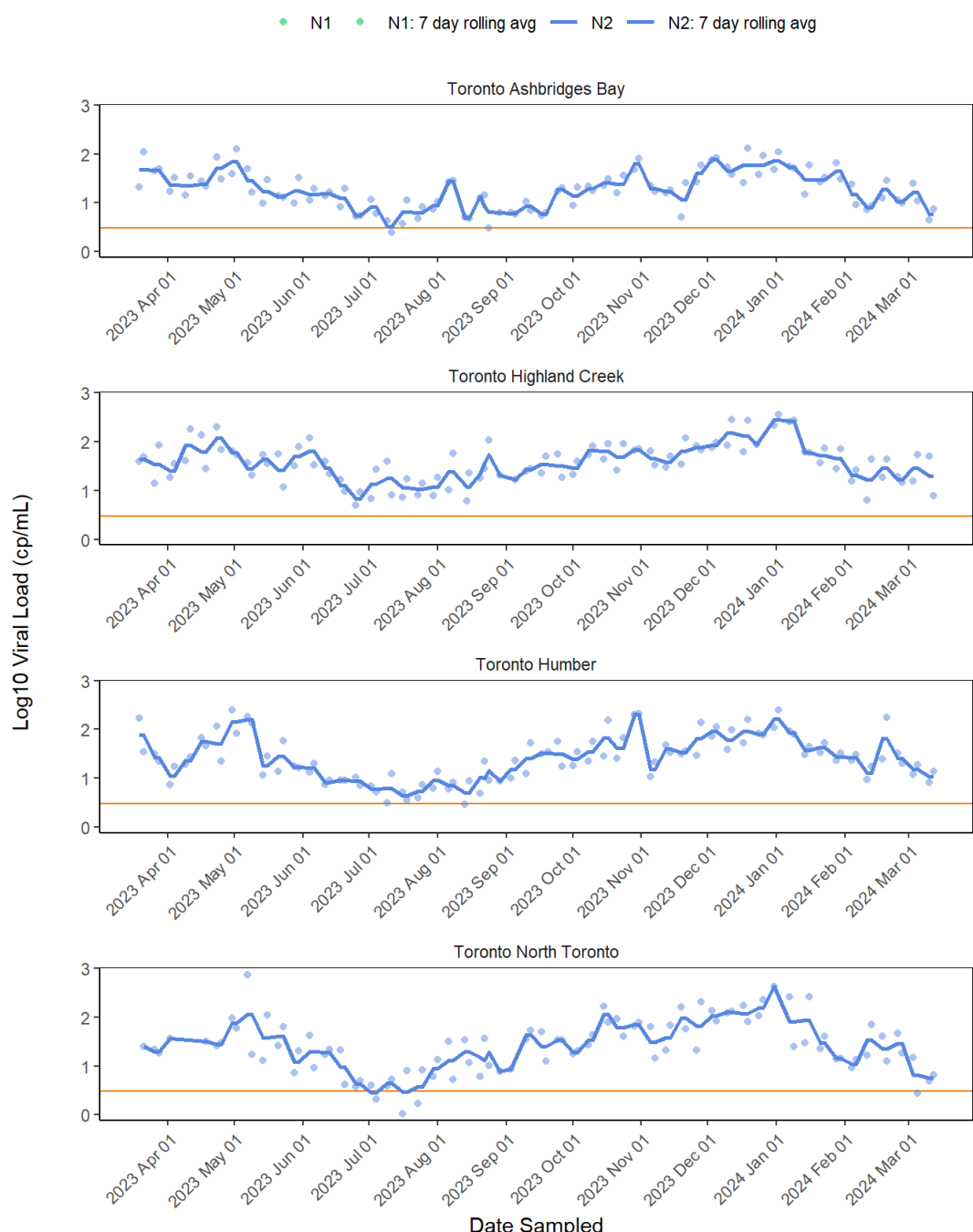
Halifax



Montreal



Toronto



Vancouver

