



Public Health
Agency of Canada

Agence de la santé
publique du Canada



Statistics
Canada

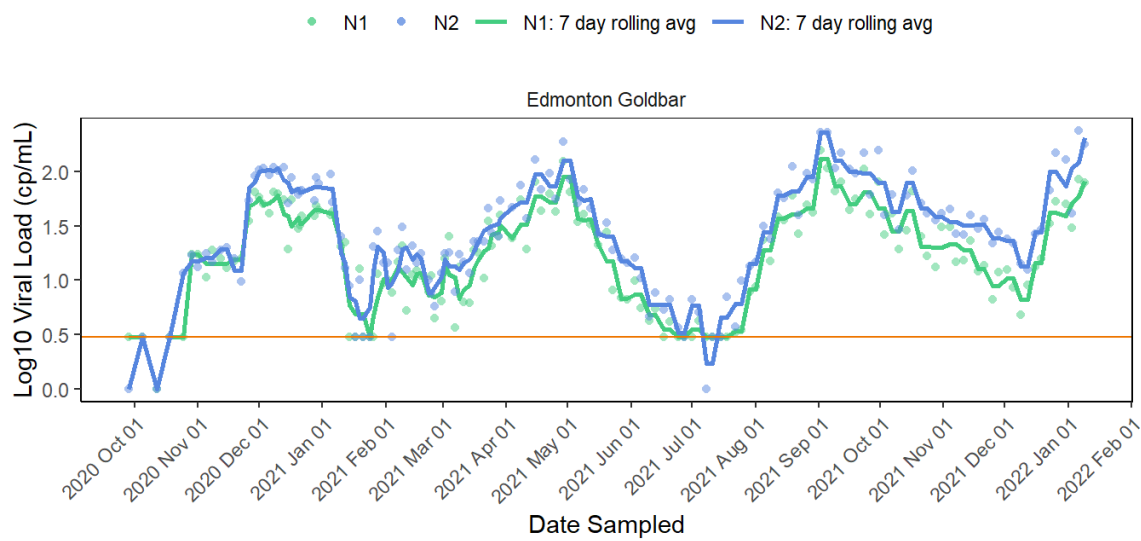
Statistique
Canada

Wastewater Trend Analysis Report: SARS-CoV-2 Detection by N1 and N2 RT-qPCR

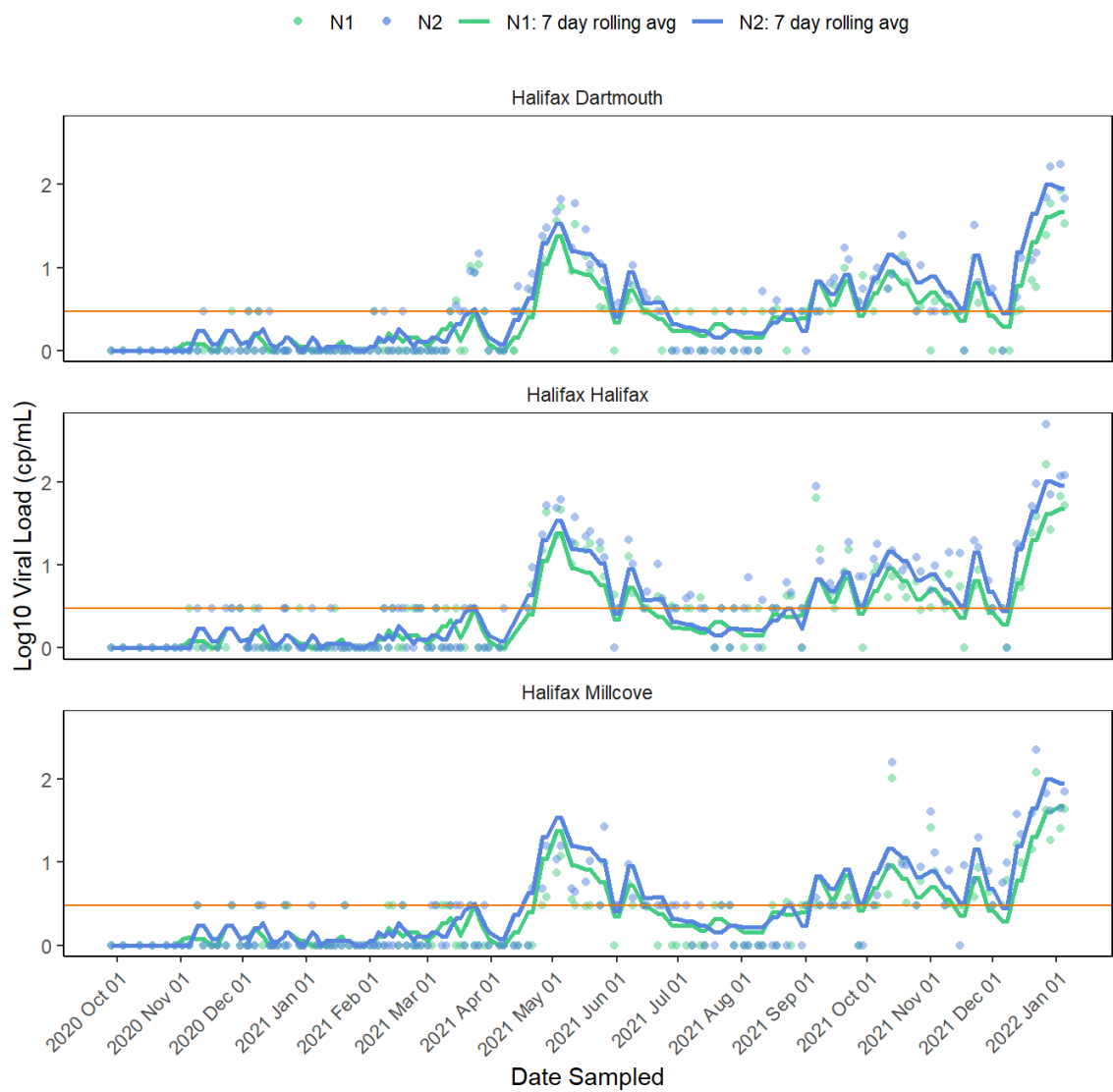
Longitudinal data ending 2022-01-11

The graphs show the concentration (copies/mL) of the SARS-CoV-2 N1 and N2 genes in wastewater samples from different sites using RT-qPCR. N1 (green) and N2 (blue) are reported for a one year period with lines representing the 7-day rolling average. The orange line represents the limit of quantification of the assay.

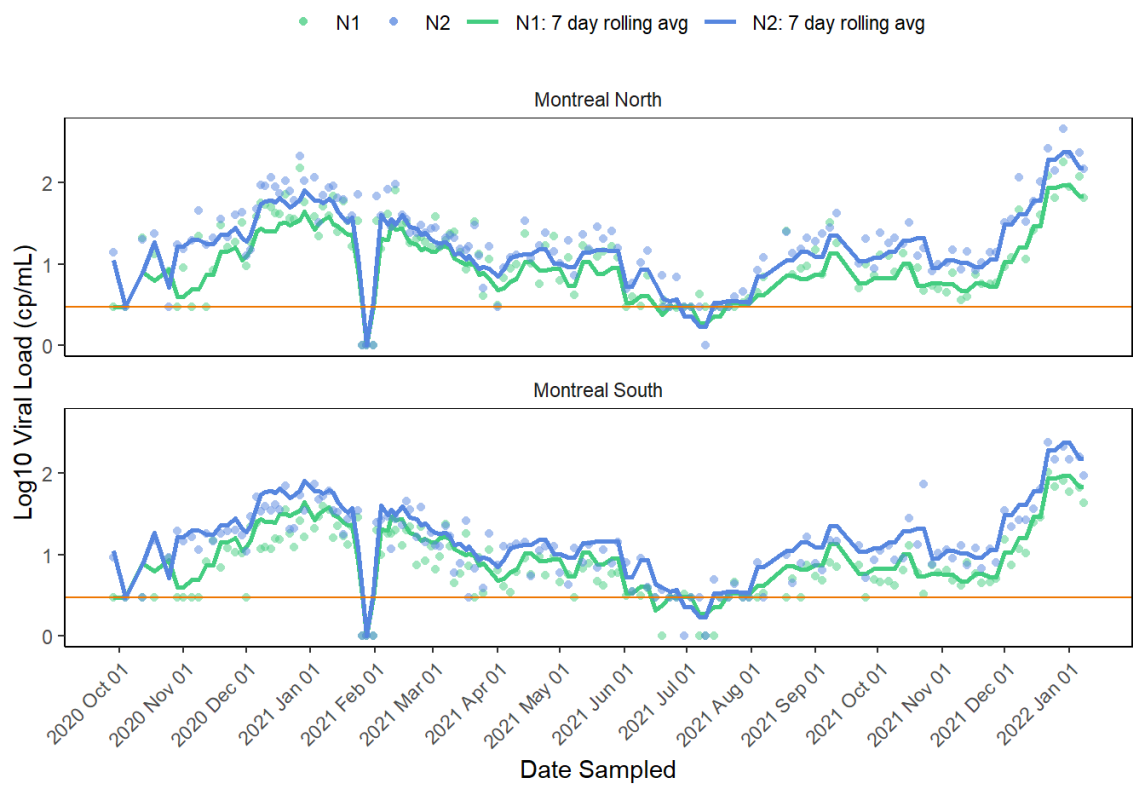
Edmonton



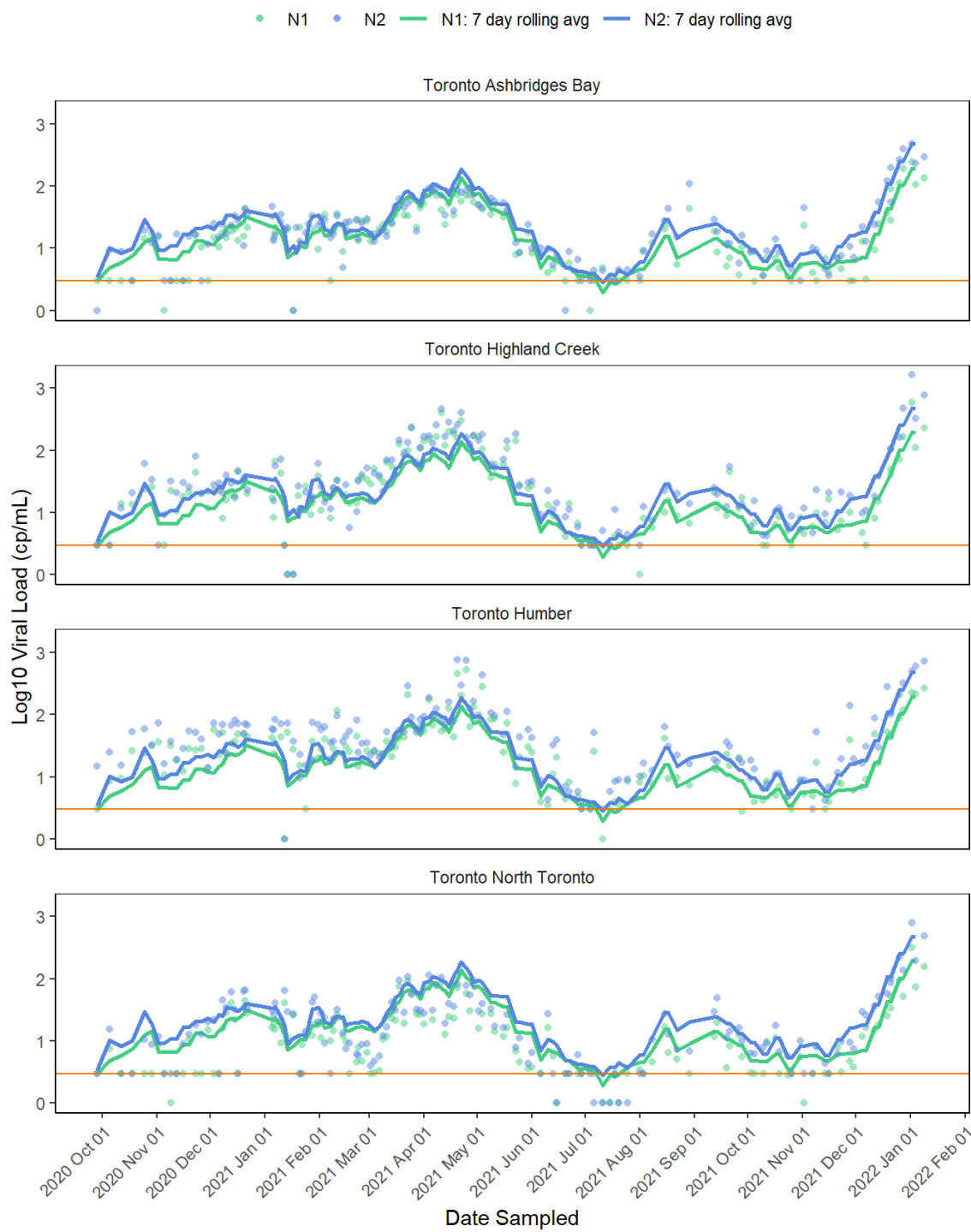
Halifax



Montreal



Toronto



Vancouver

